

Paris Session 2022



Construction of the Partial Discharge Measurement History According to IEC 60034-27-2

A1 PS2 Question 2.3

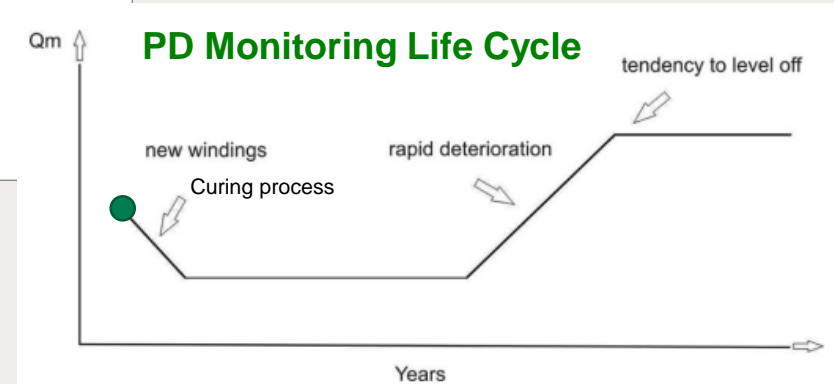
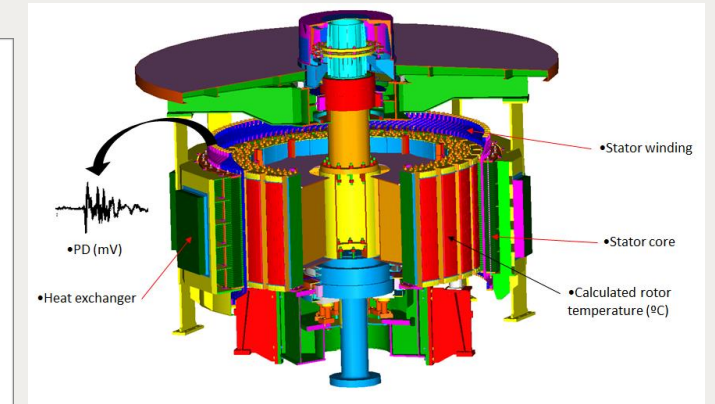
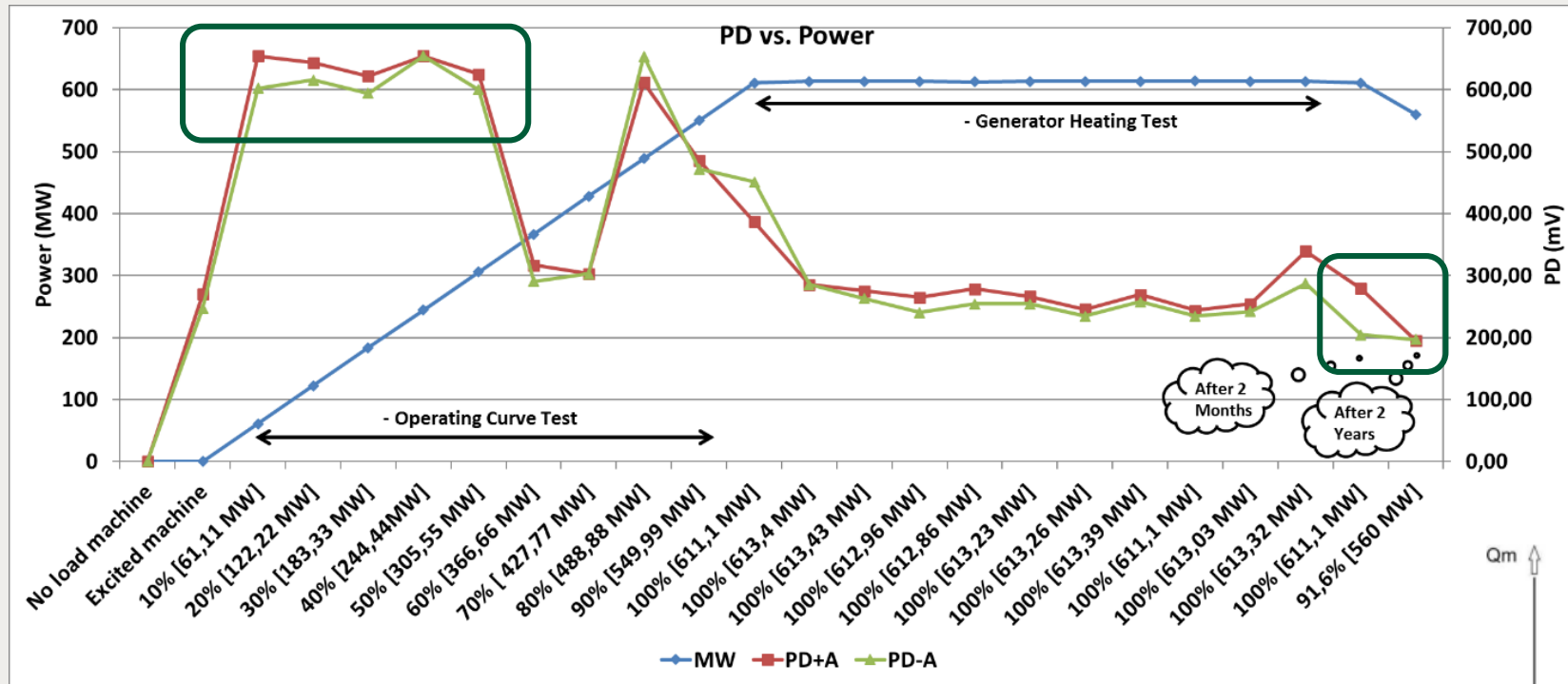
Paulo Vilhena - Brazil



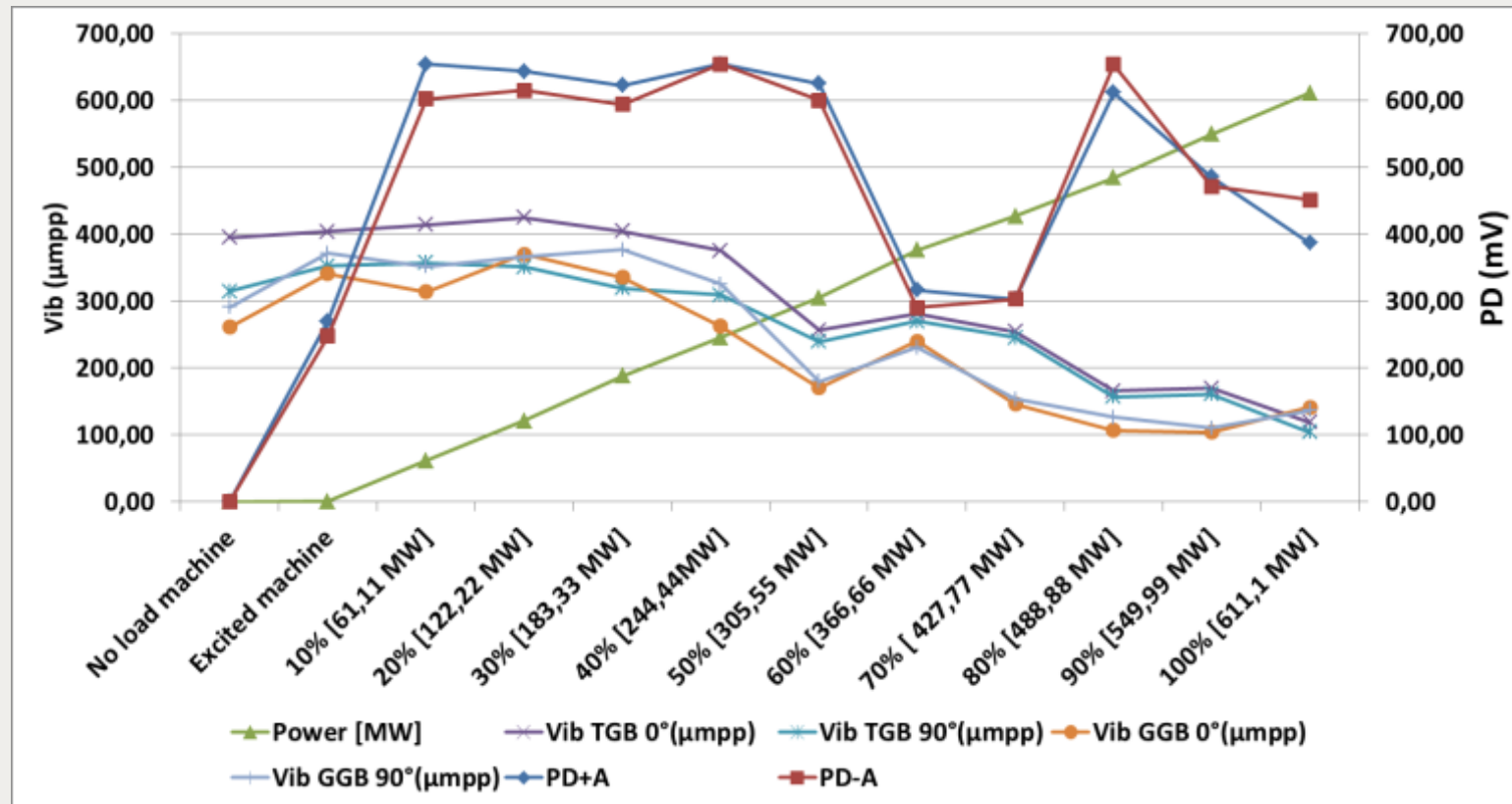
Partial Discharge Behavior Over Time of a new Generator

- Partial Discharge phase A PD (mV) and Power (MW) vs Time.

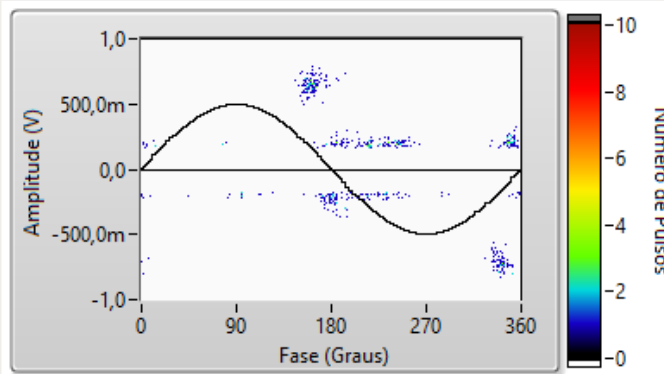
- IEC60034-27-2



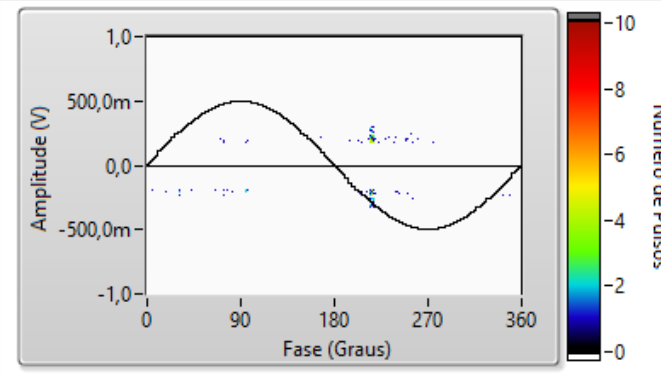
- PD A (mV) vs Vib TGB and Vib GGB (μm)



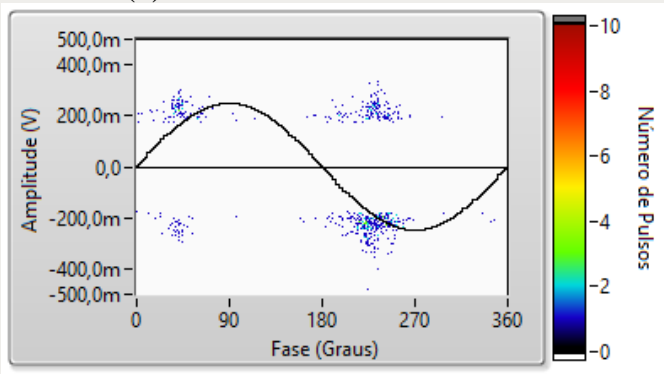
- PRPD two months (a) and after two years (b) of commercial operation in phases A and B.



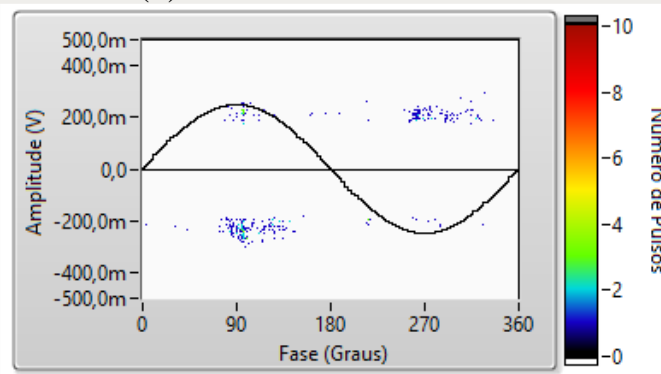
(a) Phase A PRPD – before.



(b) Phase A PRPD – after.



(a) Phase B PRPD – before.



(b) Phase B PRPD – after.

e-mail: paulo.vilhena@eln.gov.br

Whatsapp: +5596991643339

Thank you for your attention!